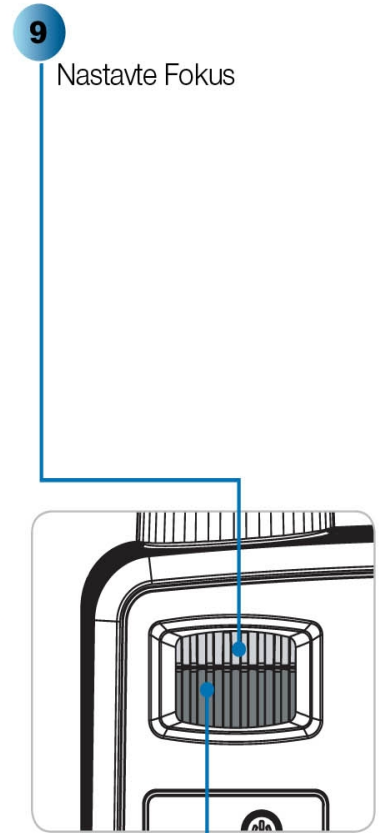
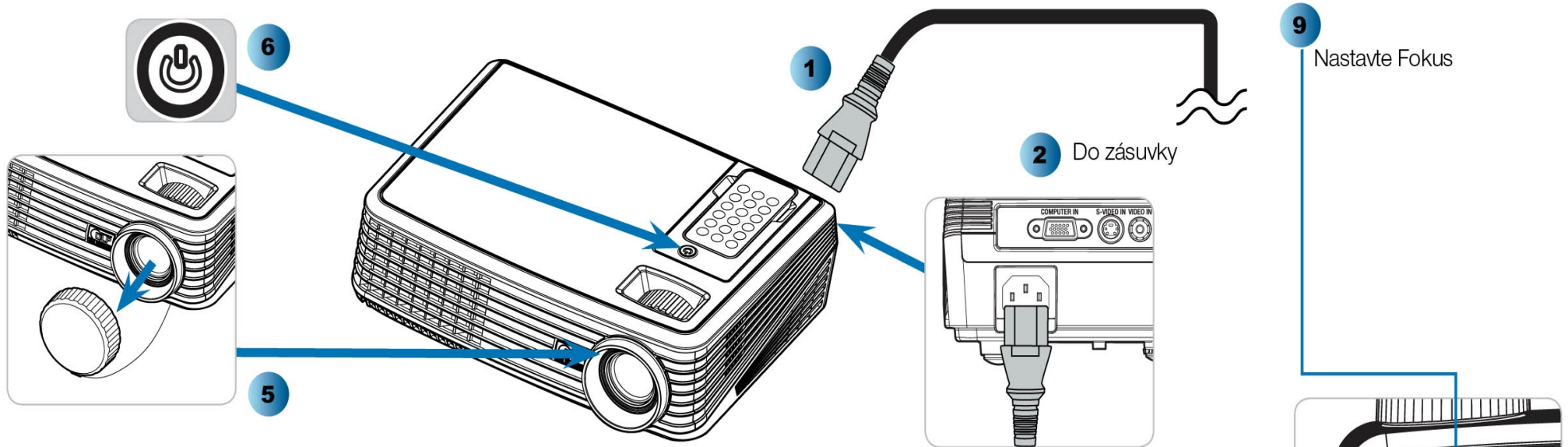


NP200/NP100 RYCHLÝ INSTALAČNÍ PRŮVODCE



7

Fn + **F7 CRT/LCD**

Nastavení přepínání výstupu

Compaq	[Fn] + [F4]
Dell	[Fn] + [F8]
Gateway	[Fn] + [F4]
Hewlett Packard	[Fn] + [F4]
IBM	[Fn] + [F7]
NEC	[Fn] + [F3]
Toshiba	[Fn] + [F5]

Macintosh Apple :

System Preferences ⇒ Display ⇒ Arrangement ⇒ Mirror display

